



# Lomond



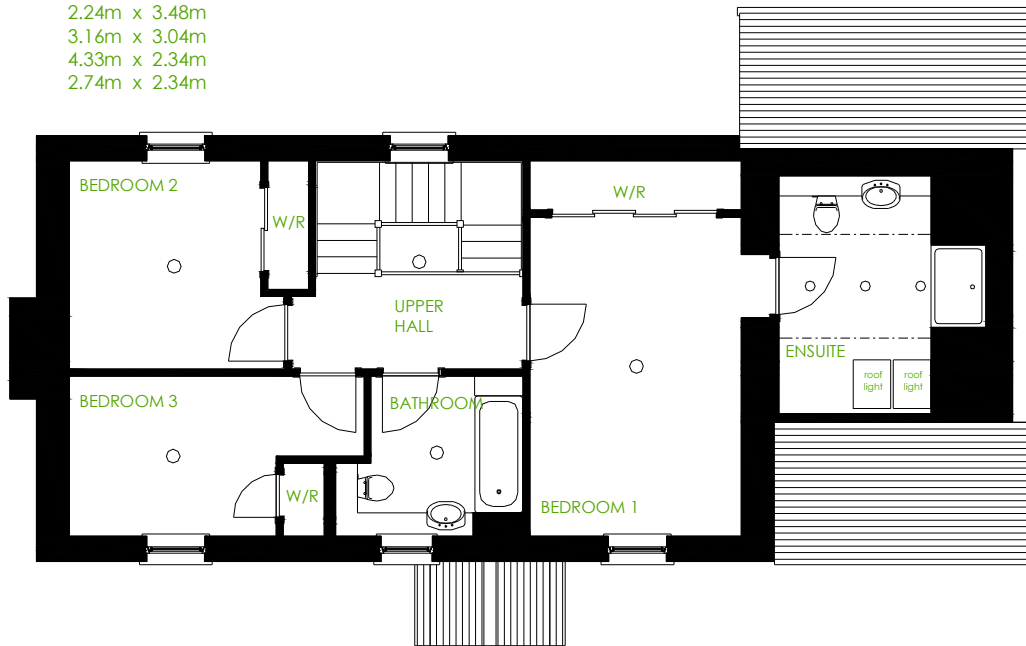
**FRONT ELEVATION**



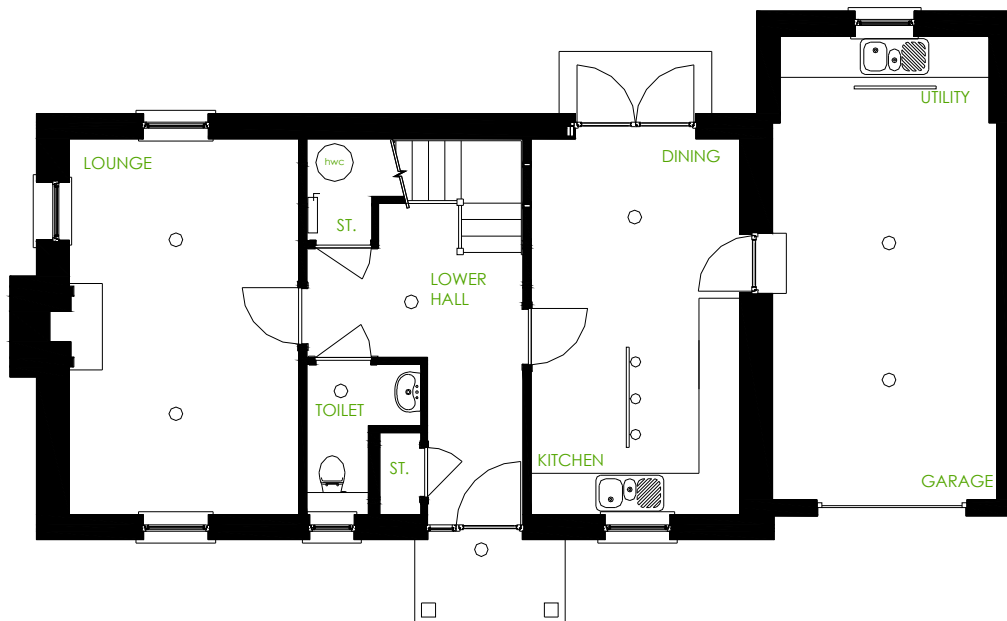
**REAR ELEVATION**

These layouts and representations are indicative only and should not be relied upon in any contract of sale.  
All details are subject to alteration / improvement without notice to prospective purchasers.

Room	Dimensions
Lounge	3.37m x 5.48m
Kitchen/Dining	3.10m x 5.48m
Toilet	1.67m x 2.18m
Garage/Utility	3.29m x 6.76m
Bedroom 1	3.10m x 4.66m
Ensuite	2.24m x 3.48m
Bedroom 2	3.16m x 3.04m
Bedroom 3	4.33m x 2.34m
Bathroom	2.74m x 2.34m



**FIRST FLOOR PLAN**



**GROUND FLOOR PLAN**

These layouts and representations are indicative only and should not be relied upon in any contract of sale. All details are subject to alteration / improvement without notice to prospective purchasers.